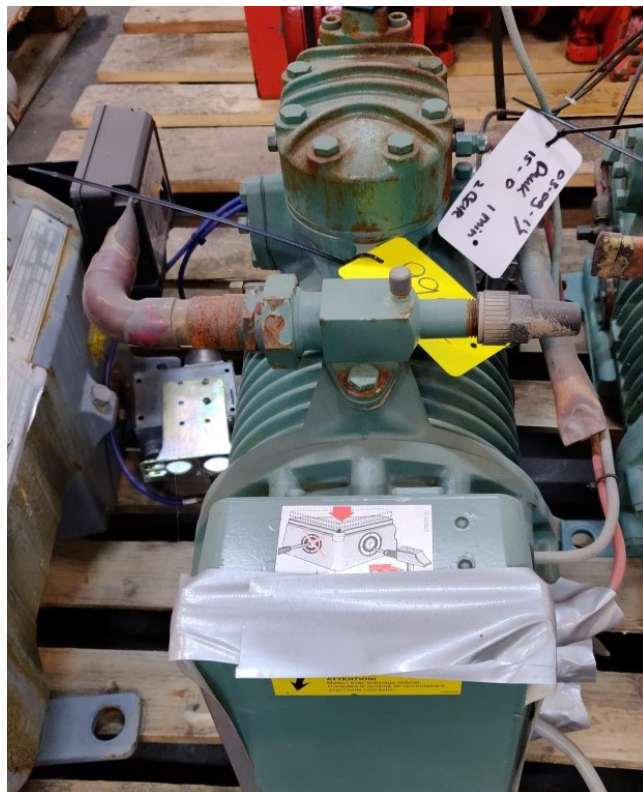


Bitzer 2Q-4.2Y

Specifications

Marka	Bitzer
Typ	2Q-4.2Y
Czynnik chłodzący	Freon
Refrigerant type	R 404 A or other types
kW at -5°C/+40°C	15.1
kW at -10°C/+40°C	12.4
kW at -20°C/+40°C	8.1
kW at -30°C/+40°C	4.9
kW at -40°C/+40°C	2.5
Stock	1



Description

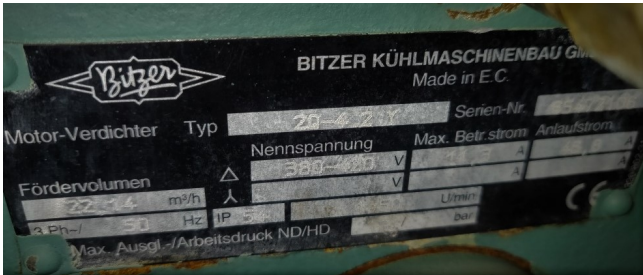
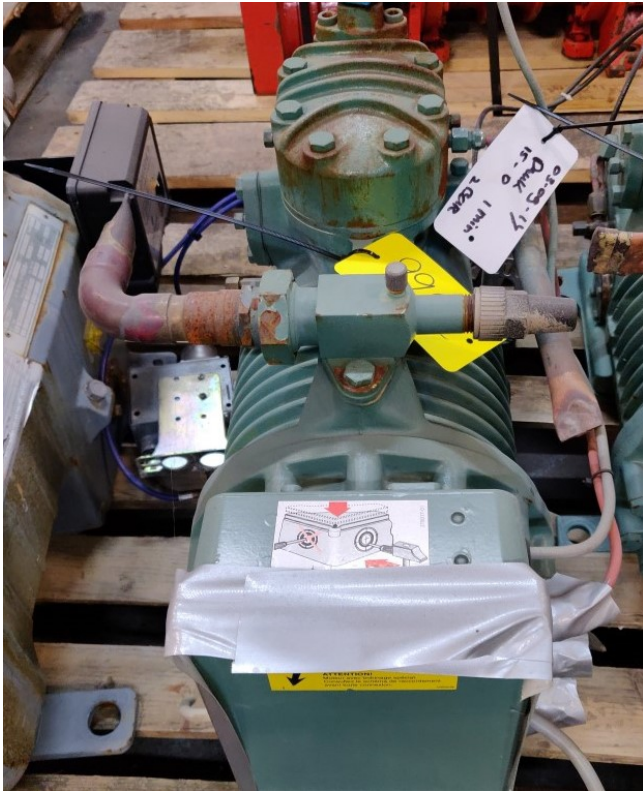
Used Bitzer 2Q-4.2Y


Used but still in good condition Bitzer 2Q-4.2Y Semi-hermetic Reciprocating Compressor. Our capacity table is based on the used type of Freon. You can also use these compressors on alternative types of Freon. For all the other specs (if available), see the picture of the manufacturer model plate or the attached pdf file. *Why choose for HOSBV? Were not only the largest used refrigeration specialist in Europe, but also, we deliver all



equipment including an extensive test,
warranty and industrial cleaning.

*Optional we can arrange the logistics.



	
BITZER Software v6.10.2 rev2250	08.10.2019 / All data subject to change.
	1 / 4

Selection: Semi-hermetic Reciprocating Compressors

Input Values

Compressor model	(4N-20.2V)	Suction gas temperature	20.00 °C
Mode	Refrigeration and Air conditioning	Operating mode	Auto
Refrigerant	R404A	Power supply	400V-3-50Hz
Reference temperature (Liq. subc. in condenser)	Dew point temp. 0 K	Capacity control	100%
		Useful superheat	100%

Result

Q [W]	Cooling capacity	COP [-]	COPIER
Q _{ev} [W]	Evaporator capacity	m [kg/h]	Mass flow
P [kW]	Power input	Op.	Operating mode
I [A]	Current	th [°C]	Discharge gas temp. w/o cooling
Q _c [W]	Condenser Capacity (w. HX)		

to	5°C	0°C	-5°C	-10°C	-15°C	-20°C	-25°C	-30°C
30°C	Q [W]	63606	53277	44316	36552	29842	24067	19121
	Q _{ev} [W]	63606	53277	44316	36552	29842	24067	19121
	P [kW]	12.20	11.08	11.13	10.53	9.86	9.12	8.29
	I [A]	21.5	20.8	19.99	19.19	18.33	17.41	16.42
	Q _c [W]	75200	64375	54888	46551	39211	32733	27000
	COP [-]	5.21	4.56	3.98	3.47	3.03	2.64	2.31
	m [kg/h]	1660	1354	1113	909	736	589	465
	Op.	Standard	Standard	Standard	Standard	Standard	Standard	Standard
	th [°C]	57.0	62.6	68.6	75.1	82.2	90.1	98.6
40°C	Q [W]	54802	45848	38056	31289	25434	20390	16071
	Q _{ev} [W]	54802	45848	38056	31289	25434	20390	16071
	P [kW]	14.11	13.42	12.66	11.81	10.89	9.91	8.87
	I [A]	24.2	23.2	22.1	20.9	19.68	18.39	17.10
	Q _c [W]	68207	58601	50079	42509	35783	29806	24496
	COP [-]	3.88	3.42	3.01	2.65	2.33	2.06	1.81
	m [kg/h]	1597	1315	1077	876	705	561	439
	Op.	Standard	Standard	Standard	Standard	Standard	Standard	Standard
	th [°C]	66.7	72.8	78.9	85.6	92.9	100.9	109.8
50°C	Q [W]	44845	37506	31089	25496	20645	16459	12871
	Q _{ev} [W]	44845	37506	31089	25496	20645	16459	12871
	P [kW]	16.05	15.21	14.24	13.18	11.98	10.73	9.42
	I [A]	27.2	25.9	24.4	22.8	21.2	19.48	17.78
	Q _c [W]	60094	51959	44618	37955	32024	26650	21824
	COP [-]	2.79	2.47	2.18	1.94	1.72	1.53	1.37
	m [kg/h]	1521	1249	1020	825	661	522	405
	Op.	Standard	Standard	Standard	Standard	Standard	Standard	Standard
	th [°C]	77.8	84.1	90.8	97.9	105.6	114.0	123.1

— No calculation possible (see message in single point selection)

*According to EN12900 (20 °C suction gas temp., OK liquid subcooling)

Application Limits 100% 4N-20.2

--

Legend